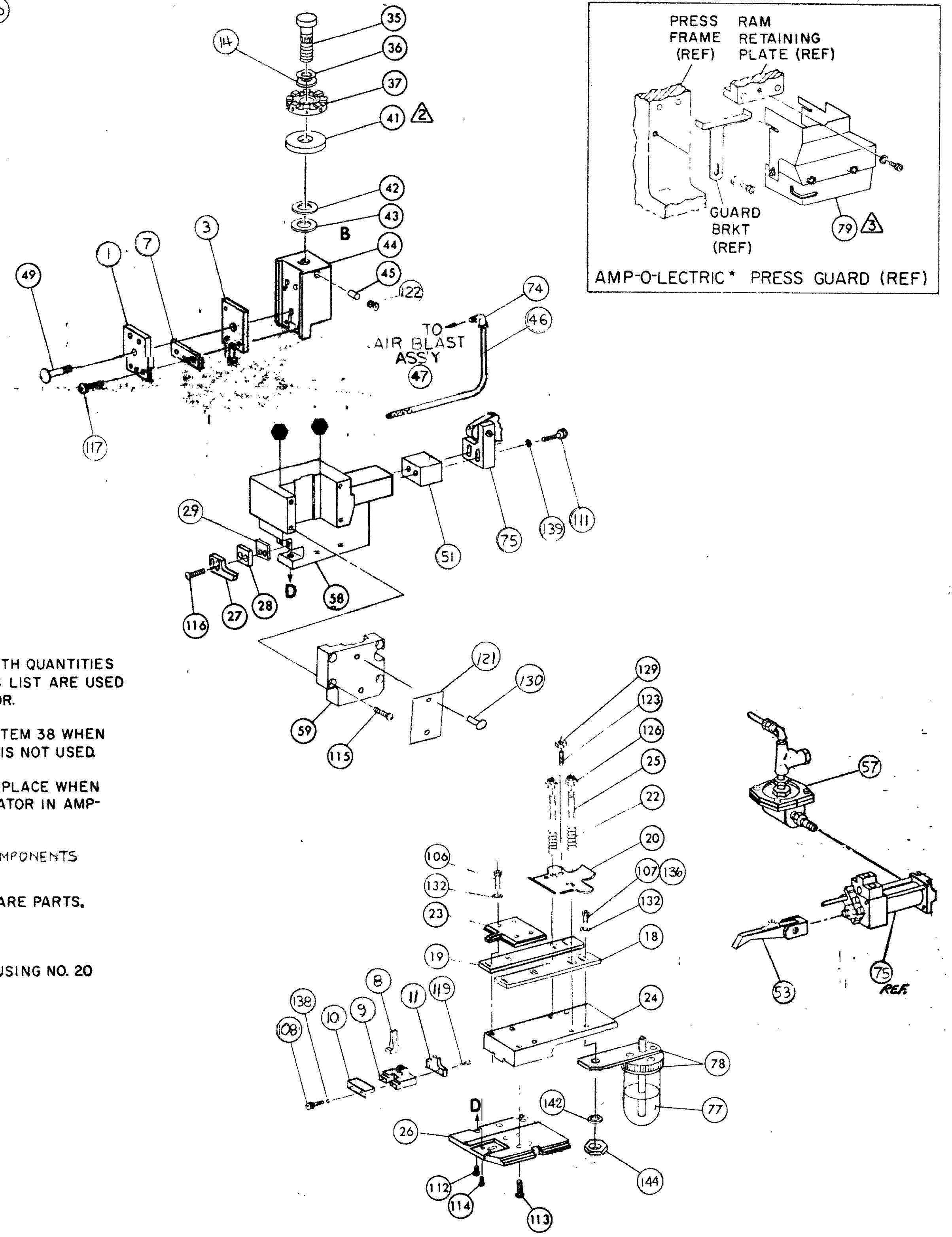
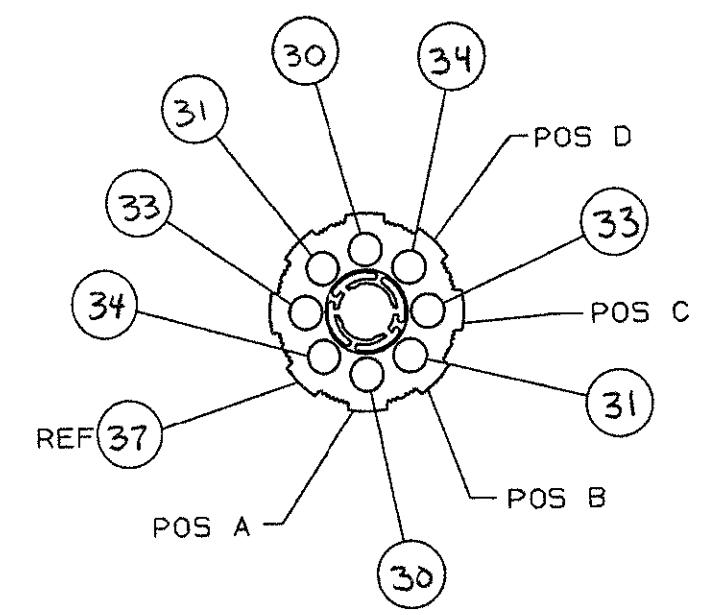


THIS DRAWING IS A CONTROLLED DOCUMENT.



- NOTES:**
- I ONLY THE ITEMS WITH QUANTITIES SPECIFIED ON PARTS LIST ARE USED ON THIS APPLICATOR.
  - ▲ USED IN PLACE OF ITEM 38 WHEN INSULATION CRIMP IS NOT USED
  - ▲ GUARD MUST BE IN PLACE WHEN OPERATING APPLICATOR IN AMP-O-LECTRIC PRESS.
  - ▲ SEE DWGS FOR COMPONENTS KEY:
  - RECOMMENDED SPARE PARTS.
  - ▲ LUBRICATE DAILY USING NO. 20 MACHINE OIL.
  - GREASE LIGHTLY.

QTY	PART NO	DESCRIPTION	ITEM NO	QTY	PART NO	DESCRIPTION	ITEM NO
1	21045-3	RING, RETAINING 'C' (.187 DIA) FEED PIN	145	1	462926-1	CAP, RAM	59
1	21018-6	NUT, HEX, MACHINE SCREW 8	144	1	453736-1	HOUSING	58
1	5-21028-1	PIN, SLOT SPG (.12 DIA X .50) FD ADJ ROD	143	1	692655-1	VALVE ASSY	57
1	21055-6	WASHER, FLAT, REGULAR SERIES 3	142	1	240422	VALVE, SHUT OFF	56
1	1-21030-7	PIN, DOWEL (.187 DIA X 1.50) HOUSING	141	1	240624-1	PIN, FEED FINGER	55
1	1-21030-1	PIN, DOWEL (.187 DIA X .50) LEVER	140	1	460680-7	SPRING, FEED FINGER	54
2	22260-7	WASHER, FLAT (NO 10) FEED BRACKET	139	1	240634-	FINGER, FEED ASSY	53
2	22260-5	WASHER, FLAT (NO 6) PLATE, RET.	138	1	461690-1	LEVER, TERMINAL	52
1	21899-4	WASHER, FLAT (5/16 DIA) SCR ADJ	137	1		SPACER, AIR FEED	51
1	3-21000-0	SCR, SKT (8-32 X .875) STRIP GUIDE	136				50
1	21024-5	WASHER, LOCK (NO 10) FEED ADJ PLATE	135	1	7-21002-9	BOLT, CRIMPER	49
1	21024-5	WASHER, LOCK (NO 10) SHEAR PLATES	134			CAM, FEED STROKE	48
1	21024-5	WASHER, LOCK (NO 10) FEED ROD GUIDE	133	1	455350-1	AIR BLAST ASSY	47
2	21024-4	WASHER, LOCK (NO 8) STRIP GUIDE	132	1	6894462	TUBE, AIR BLAST	46
1	21024-4	WASHER, LOCK (NO 8) SHEAR BLADE	131	1	690191-1	PLUG, NYLON	45
2	21017-2	SCR, DRIVE (#2 X .19)	130	1	459586-1	RAM	44
2	21018-4	NUT, HEX MACH (4-40) DRAG	129	1	690125-1	WASHER, LAMINATED	43
1	21068-5	NUT, HEX MACH (6-32) FD ADJ PLATE	128	1	690124-9	WASHER, RAM	42
1	21018-7	NUT, HEX MACH (10-32) DRAG SPRING	127	1	690223-1	SPACER, DISC	41
2	21022-2	NUT, HEX SELF-LKG (8-32) DRAG STUD	126	1	23241-6	BALL, STEEL	40
1	5-21004-7	SCR, SKT HD SHLD (250 DIA X .25) DRAG ARM	125	1	690170-1	SPRING, COMPRESSION	39
1	21004-5	SCR, SKT HD SHLD (250 DIA X 1.00) DRAG	124	1		DISC, INSULATION	38
2	4-21078-8	SCR, SKT SET OVAL POINT (4-40 X .75) DRAG	123	1	354777-1	DISC, WIRE	37
1	21009-2	SCR, SKT SET (1/4-20 X 25) (LOC-WEL) RAM	122	1	22480-5	WASHER, SPRING	36
1	464249-1	PLATE, I.D.	121	1	690212-1	POST, RAM	35
1	1-21002-7	SCR, BTN HD SKT CAP (6-32 X .38) CAM	120	2	7-354778-2	PIN, WIRE DISC (.2855) D	34
2	1-21002-6	SCR, BTN HD SKT CAP (6-32 X .25) PLATE, GUIDE	119	2	6-354778-3	PIN, WIRE DISC (.2810) C	33
1	3-21064-2	SCR, RD HD MACH (6-32 X 1.50) FEED ADJ	118	1	458980-	APPLICATOR, BASIC (SUB ASSY)	32
2	2-21002-9	SCR, BTN HD SKT CAP (10-32 X .75) SHEAR	117	2	5-354778-6	PIN, WIRE DISC (.2775) B	31
2	8-21002-9	SCR, BTN HD SKT CAP (8-32 X 1.00) STRIPPER	116	2	4-354778-2	PIN, WIRE DISC (.2705) A	30
4	2-21002-9	SCR, BTN HD SKT CAP (10-32 X .75) HSG CAP	115	1	1-690451-8	SPACER, STRIPPER	29
2	2-22733-0	SCR, BTN HD SKT CAP (10-32 X .38) (LOC-WEL) ANVIL	114	1	3-690451-5	SPACER, STRIPPER	28
4	3-21002-3	SCR, BTN HD SKT CAP (1/4-20 X .50) STR GDE PL	113	1	460276-1	STRIPPER	27
3	17177-1	SCR, BTN HD SKT CAP (1/4-20 X .62) BASE PL	112	1	459584-1	PLATE, BASE	26
2	4-21000-3	SCR, SKT HD CAP (10-32 X 2.00) AIR FEED BRACKET	111	2	22354-9	DRAG, STUD	25
1	2-21000-4	SCR, SKT HD CAP (6-32 X 1.00) DRAG ADAPTOR	110	1	462931-1	PLATE, STRIP GUIDE	24
2	23030-1	SCR, SKT HD CAP (6-32 X .25) (LOC-WEL) CP DISC	109	1	462932-4	PLATE, STRIP HOLD	23
2	1-21000-9	SCR, SKT HD CAP (6-32 X .38) PLATE, RET.	108	2	4-22281-1	SPRING, DRAG	22
1	2-21000-6	SCR, SKT HD CAP (8-32 X .38) STRIP GUIDE	107	1	240636-1	LEVER, DRAG	21
4	221002-2	SCR, SKT HD CAP (8-32 X .50) PLATE, STRIP HOLD	106	1	462925-1	DRAG, STOCK	20
1	3-21000-7	SCR, SKT HD CAP (10-32 X .75) FD ROD GUIDE	105	1	462929-2	GUIDE, STRIP (REAR)	19
1	3-21000-9	SCR, SKT HD CAP (10-32 X 1.00) DRAG SPRING	104	1	462930-2	GUIDE, STRIP (FRONT)	18
1	3-21000-6	SCR, SKT HD CAP (10-32 X .62) FD ADJ PLATE	103	1	454178-1	GUIDE, FEED ROD	17
1	3-21000-4	SCR, SKT HD CAP (10-32 X .38) PIVOT BLK	102	1	4-22284-9	SPRING, FEED RETURN	16
1	3-21000-8	SCR, SKT HD CAP (10-32 X .88) SHEAR PLATE	101	1		ADAPTER, DRAG	15
1	460980-2	GUARD ASSY	79	1	986950-1	WASHER, FLAT PRECISION	14
1	1-465184-7	LUBRICATOR ASSY	78	1		SPACER, HOLD DOWN	13
REF	852931-2	OIL, LUBRICATING	77	1		SPRING, HOLD DOWN	12
1	454406-1	SPACER, LUB BRACKET	76	1	459684-5	PLATE, GUIDE RET.	11
1	460277-1	AIR FEED ASSY	75	1	459580-1	PLATE, ANVIL RET.	10
1	22317-3	ELBOW, COPPER TUBE	74	1	459583-5	BODY, ANVIL	9
1	458109-1	WASHER, FLAT (SPECIAL)	73	1	459582-9	ANVIL	8
1	690603-1	SPRING, ASSIST	72	1	459581-6	BLADE, SLUG	7
1	690517-1	SPACER	71	1		HOLD DOWN, TERMINAL	6
1	22594-8	NUT, HEX	70	1		SPACER, SHEAR BLADE	5
1	240628-1	PLATE, ADJ	69	1		SPACER, TUBULAR	4
1	240626-1	SHAFT, PIVOT	68	1	459587-1	CRIMPER, GUIDE	3
1	240633-1	BUSHING	67	1	459585-6	SPACER, INSULATION	2
1	455680-1	LEVER, INTERMEDIATE	66	1		CRIMPER, WIRE	1
1	240629-1	BLOCK, PIVOT	65	1			
1	240632-2	SCREW, ADJ	64	1			
1	240659-3	PIN, CAM ROLLER	63	1			
1	240658-1	CAM, ROLLER	62	1			
1	454398-1	ROD, FEED	61	1			

CRIMPING DATA				APPLICATOR WILL APPLY	
PAD LTR	CRIMP HEIGHT	WIRE SIZE	SET-UP WIRE	62310-2	
A	.117	11,600-13,000	#12 STRAND #13 MAGNET	62770	
B	.112	10,200-11,400	#12 STRAND #12 MAGNET		
C	.107	8,600-10,000	2(14) MAGNET 2(15) MAGNET OR 2(14) MAGNET		
D	.102	7,000-8,400			
CRIMP SIZE	TYPE	FEED	APPL INST		
WIRE	.180	F	.345	A1 8039	
INSUL					
WIRE RANGE	7,000-13,000	INSULATION RANGE	PRESS NO	565435-5	
REMARKS	AMP-O-LECTRIC AIR-FEED AIR-BLAST				

REMARKS	NO	REV
APPL USED ON MACHINE PART NO	MACH SERIAL NO	DISTRIBUTION
CUSTOMER NAME	APPL SERIAL NO	ORIGINAL
ADDRESS	PURCHASE ORDER	CUSTOMER COPY
CITY	ENG APP	FIELD ENG COPY

H ECN 0150-9323-39 11-5-93 SETUP PAGE 10-1  
 E 0150-7601-97 11-5-93  
 D EC 0150-4601-93 11-5-93  
 C ECN 0150-4128-92 11-5-92  
 B ECA-272290 11-5-92  
 A REV PER ECN R-5504 11-5-92

AMP INCORPORATED  
 Harrisburg, Pa.  
 D NO 567091-1  
 MINIATURE QUICK CHANGE APPLICATOR  
 END FEED (AMPLIVAR) SPLICE