

## AI-TWIN 2X 2,5 -13 BU

Order No.: 3200878

<http://eshop.phoenixcontact.de/phoenix/treeViewClick.do?UID=3200878>

Ferrule, Length: 21.5 mm, Color: blue

**Commercial data**

|                          |                    |
|--------------------------|--------------------|
| EAN                      | 4017918094423      |
| Pack                     | 100 pcs.           |
| Customs tariff           | 85369010           |
| Weight/Piece             | 0.000349 KG        |
| Catalog page information | Page 667 (CL-2009) |

**Product notes**WEEE/RoHS-compliant since:  
01/01/2005

<http://www.download.phoenixcontact.com>  
Please note that the data given here has been taken from the online catalog. For comprehensive information and data, please refer to the user documentation. The General Terms and Conditions of Use apply to Internet downloads.

**Technical data****General**

|  |         |
|--|---------|
| Length (b)                                   | 21.5 mm |
| Color  | blue    |
| Material                                     | E-CU    |
| Sleeve length                                | 13 mm   |
| Inner dimension of the insulating collar (d) | 4.2 mm  |

|                             |        |
|-----------------------------|--------|
| Ferrule diameter            | 2.9 mm |
| Insulating collar thickness | 0.3 mm |
| Sleeve wall thickness       | 0.2 mm |
| Dimension d3                | 7.8 mm |

**Certificates / Approvals**

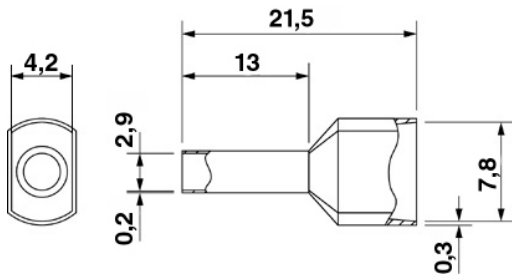


Certification

CSA, UCSA

**Diagrams/Drawings**

Dimensioned drawing



**Address**

PHOENIX CONTACT Inc., USA  
586 Fulling Mill Road  
Middletown, PA 17057, USA  
Phone (800) 888-7388  
Fax (717) 944-1625  
<http://www.phoenixcon.com>



© 2010 Phoenix Contact  
Technical modifications reserved;