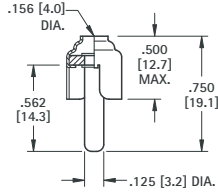


PHONO PLUGS

- Mates with .125 (3.2) diameter jacks

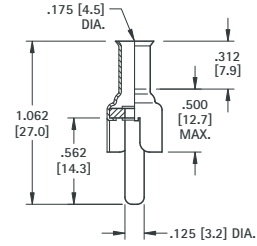
CONVENTIONAL TYPE



CAT. NO. 561

MATERIAL:
Shell: Brass, Nickel Plate
Pin: Brass, Nickel Plate

CRIMP OR SOLDER TYPE EXTRA LONG HANDLE



CAT. NO. 567

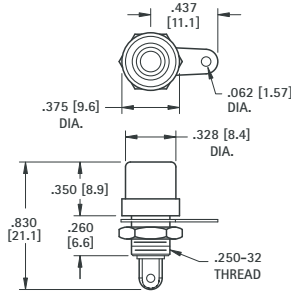
MATERIAL:
Shell: Steel, Tin Plate
Pin: Brass, Nickel Plate

PANEL MOUNT PHONO JACKS

- Mates with .125 (3.12) dia. pin
- Mounts to panel in .296 (7.6) dia. hole
- Color coded for ease of identification
- Complete with nut and solder lug

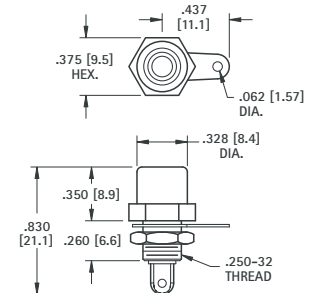
MATERIAL: Brass, Nickel Plate

ROUND BASE



CAT. NO.	INSULATOR COLOR
598	WHITE
580	RED
574	BLACK
599	YELLOW

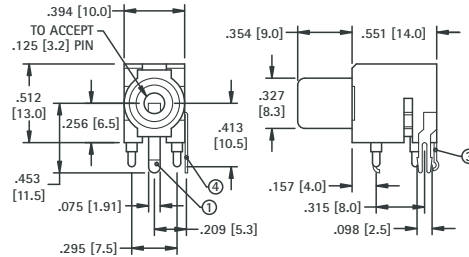
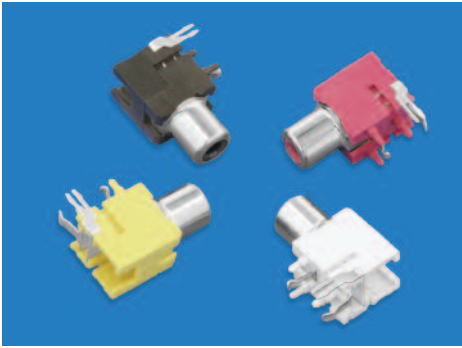
HEX BASE



CAT. NO.	INSULATOR COLOR
581	WHITE
582	RED
576	BLACK
583	YELLOW

COLOR KEYED - PC PHONO JACKS

- Mates with .125 (3.2) diameter pins
- Features a normally closed circuit
- Various colors for circuit identification
- Snap-fit mounting for positive retention during wave soldering



CAT. NO.	INSULATOR COLOR
970	WHITE
971	RED
972	BLACK
973	YELLOW

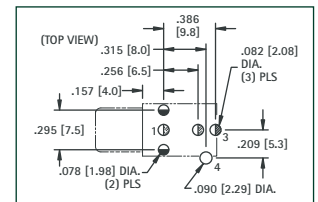
SPECIFICATIONS

Housing: PBT
Ground Terminal: .020 (.51) Brass, Nickel Plate ①
Spring Contact: .012 (.30) Phosphor Bronze, Silver Plate ③
Shunt Terminal: .016 (.41) thick Brass, Silver Plate ④

SCHEMATIC



Mounting Detail



"F" FEMALE CONNECTOR

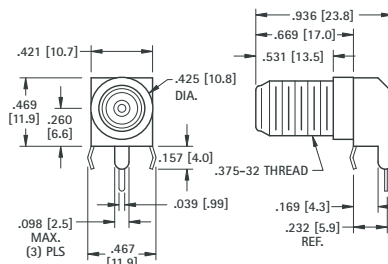


- Low profile
- Snap-fit mounting for positive retention during wave soldering
- Rugged, stable construction facilitates reliable mating
- High reliability, manufactured using Nickel Plated Brass bodies and Tin Plated Brass contacts

MATERIAL:
Shell: Steel, Tin Plate
Body: Brass, Nickel Plate
Contacts: Brass, Tin Plate

CAT. NO. 911

SNAP-FIT PC MOUNT



Mounting Detail

