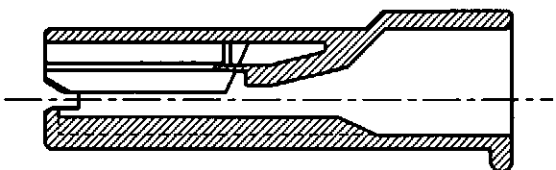
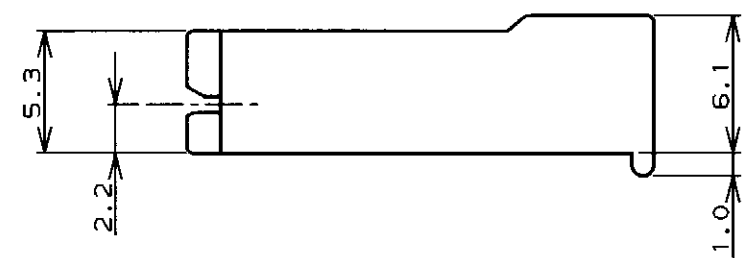
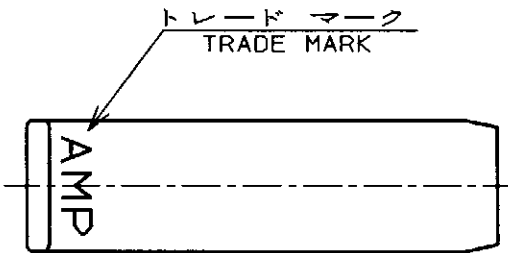
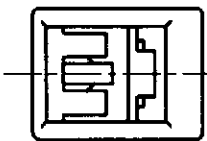
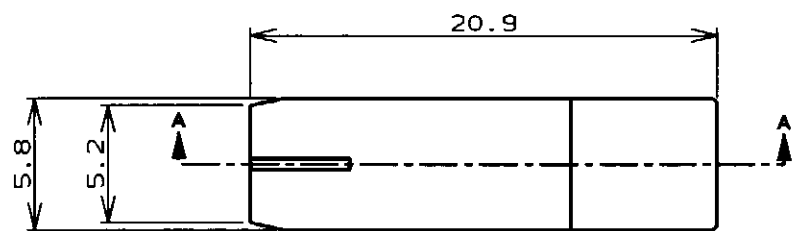
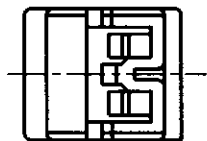
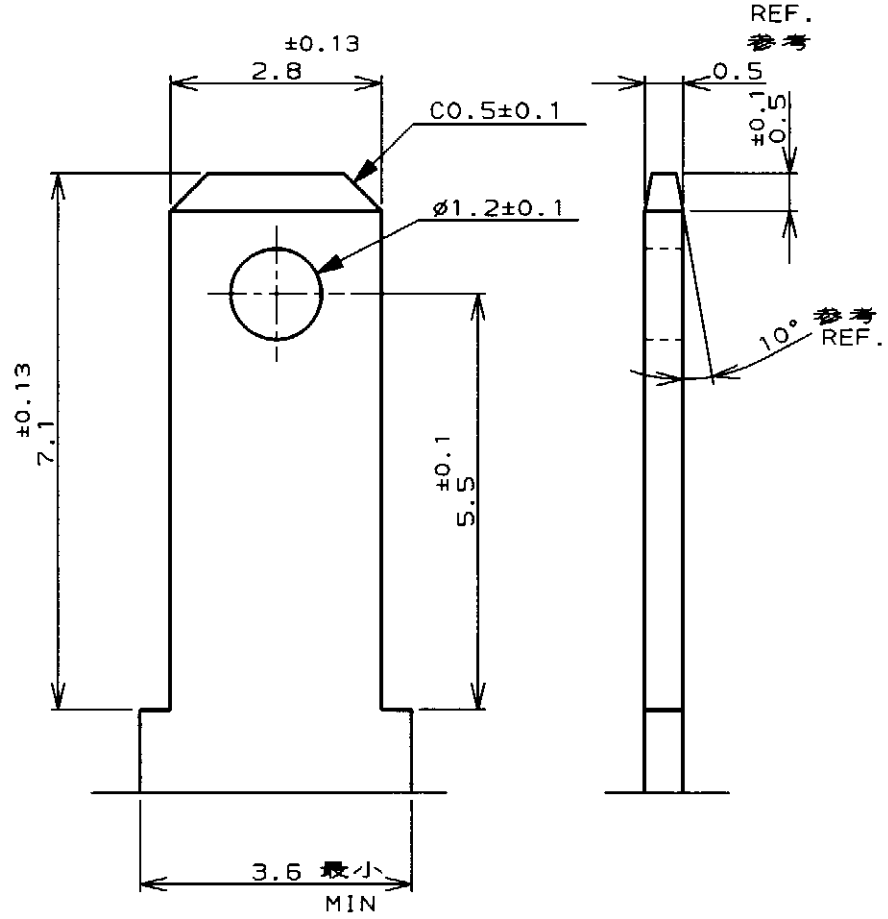


LOC	DIST	REVISIONS						
		P	LTR	DESCRIPTION	ECN	DATE	DWN	APVD
J			0	RELEASED	FJ00-0400-97	4. APR. '97	M.S	M.S
			A	REVISED	FJ00-0952-97	26 JUN '97	あさ	あさ



断面 "A" - "A" SECT.



推奨タブ図 APPLICABLE TAB DIMENSIONS

自然色 (NATURAL)	353251-1
色調 (COLOR)	型番 (P/N)

THIS DRAWING IS A CONTROLLED DOCUMENT FOR AMP INCORPORATED. IT IS SUBJECT TO CHANGE AND THE CONTROLLING ENGINEERING ORGANIZATION SHOULD BE CONTACTED FOR THE LATEST REVISION.		DWN M. SUZUKI 4. APR. '97		INSULATION DIA 被覆外径	
DIMENSIONS: 単位: 概 mm		CHK M. SHINDO 4. APR. '97		AMP 日本アール・エム・シー株式会社 Kawasaki, Japan	
TOLERANCES UNLESS OTHERWISE SPECIFIED		APVD M. SHINDO 4. APR. '97		NAME 110 シリーズ ポジティブ ロック EX-III	
一般公差: 10mm ±0.2, 30mm ±0.25, 100mm ±0.3, ANGLE ±0.3°		PRODUCT SPEC 108-5530		1極 ハウジング	
MATERIAL 6/6ナイロン (UL94V-0) 6/6 NYLON		APPLICATION SPEC 114-5229		110 SERIES POSITIVE LOCK EX-III	
FINISH 仕上		WEIGHT		1Pos. HOUSING	
CUSTOMER DRAWING		SIZE A3		CAGE CODE 00779	
		DRAWING NO. 番号 C=353251			
		SCALE 尺度		SHEET 1 OF 1 REV A	