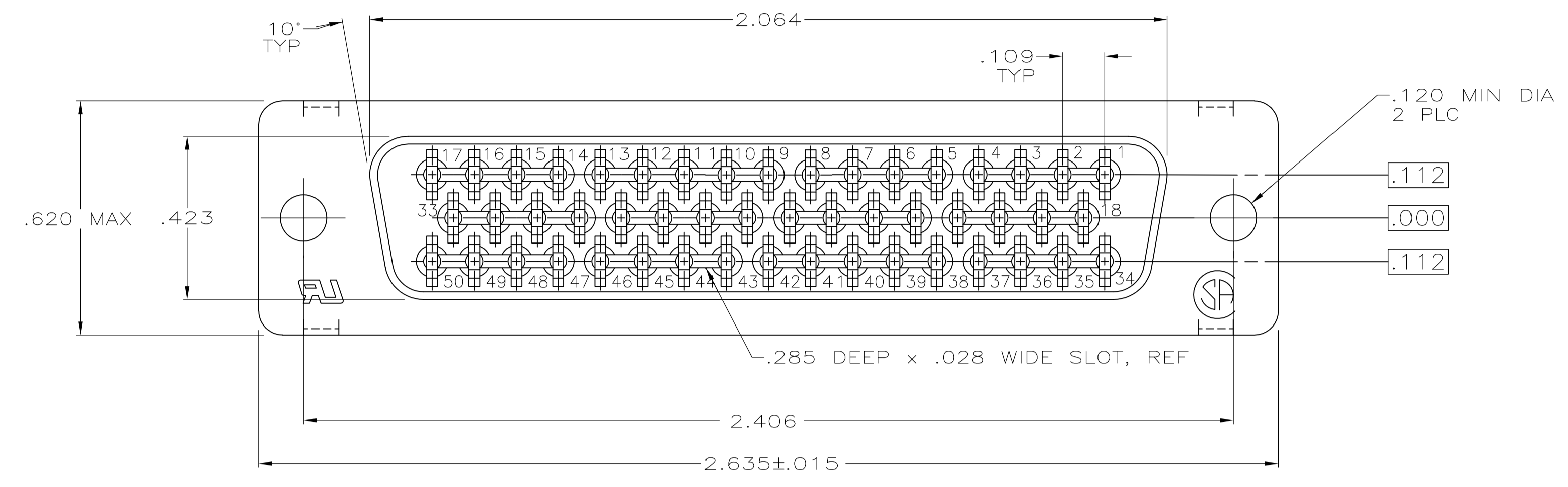
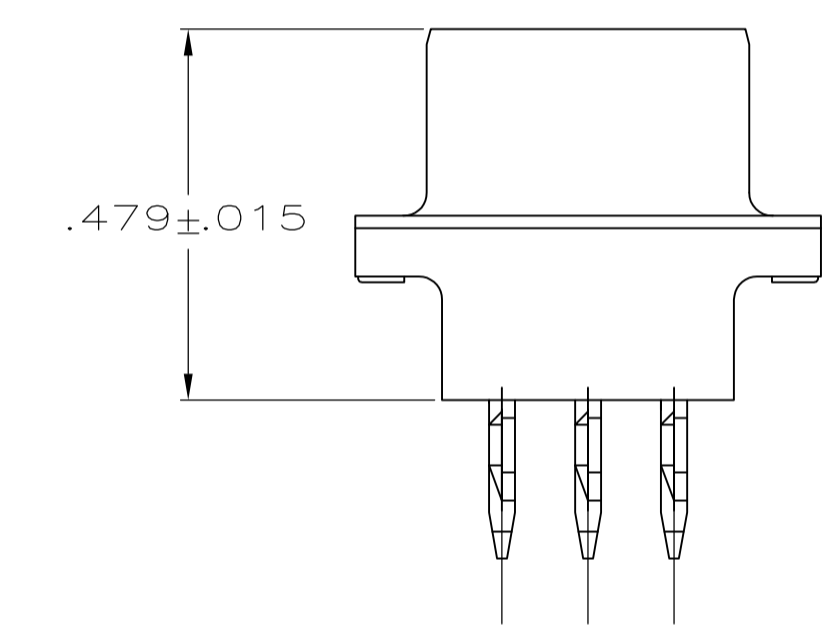
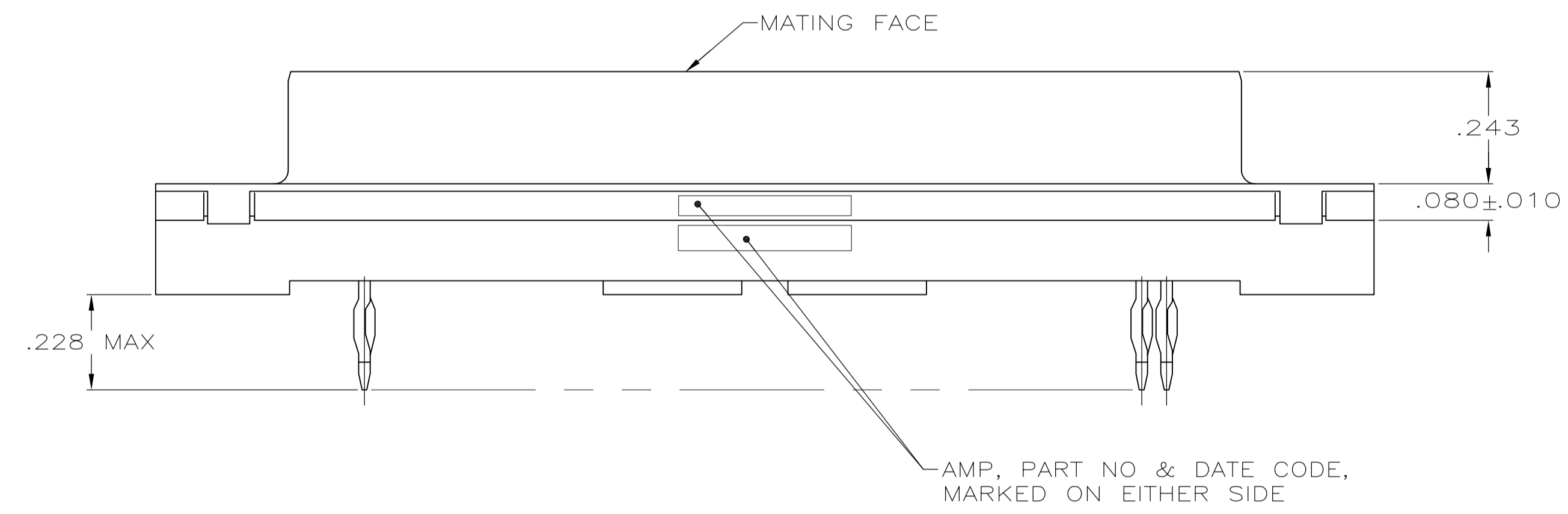


LOC		DIST		REVISIONS			
GP	00	REV	DATE	BY	CHK	APPV	
H	REVISED PER ECO-12-000090		30JAN2012	CJV	SLB		



- 1 FOR USE WITH .093 MINIMUM THICK PRINTED CIRCUIT BOARD. REFER TO APPLICATION SPECIFICATION FOR PRINTED CIRCUIT BOARD LAYOUT DIMENSIONS AND FINISH RECOMMENDATIONS.
- 2 DUPLEX PLATED: GOLD FLASH ON MATING SURFACE, BRIGHT TIN OR BRIGHT TIN LEAD ON COMPLIANT PIN, ALL OVER NICKEL.
- 3 .000030 MINIMUM GOLD IN MATING AREA.
 .000100 MINIMUM TIN OR TIN-LEAD ON COMPLIANT PIN.
 ALL OVER .000050 MINIMUM NICKEL.
 OR
 GOLD FLASH OVER PALLADIUM NICKEL
 .000030 MINIMUM TOTAL IN MATING AREA.
 .000100 MINIMUM TIN OR TIN-LEAD ON COMPLIANT PIN.
 ALL OVER .000050 MINIMUM NICKEL.
- 4 PLATED .0002-.0004 BRIGHT TIN



SUPERSEDED BY 747143-2	747143-2
	747143-1
CONTACT FINISH	PART NO

THIS DRAWING IS A CONTROLLED DOCUMENT. DIMENSIONING AND TOLERANCING PER ASME Y14.5M-2009		DIN D. HARDY 04-12-94	TE Connectivity	
DIMENSIONS: INCHES		CHK R. STONE 04-26-94	RCPT ASSY, SIZE 5, 50 POSN, AMPLIMITE™ HDP, MDM PROFILE, W/ ACTION PIN CONT & METAL SHELL	
TOLERANCES UNLESS OTHERWISE SPECIFIED:		APVD	RESTRICTED TO	
0 PLC ± -	1 PLC ± -	NAME	SIZE	
2 PLC ± -	3 PLC ± .005	PRODUCT SPEC 108-40014	CAGE CODE DRAWING NO	
4 PLC ± -	ANGLES ± ± °	APPLICATION SPEC 114-40026	WEIGHT	
MATERIAL: HOUSING: FLAME RETARDANT 94V-0, PAIRED THERMOPLASTIC; COLOR: BLACK; CONTACTS: COPPER ALLOY; SHELL: CARBON STEEL		FINISH: CONTACTS: SEE TABLE; SHELL: 1		SCALE 4:1
CUSTOMER DRAWING		A1 00779 C=747143		SHEET 1 OF 1 REV H