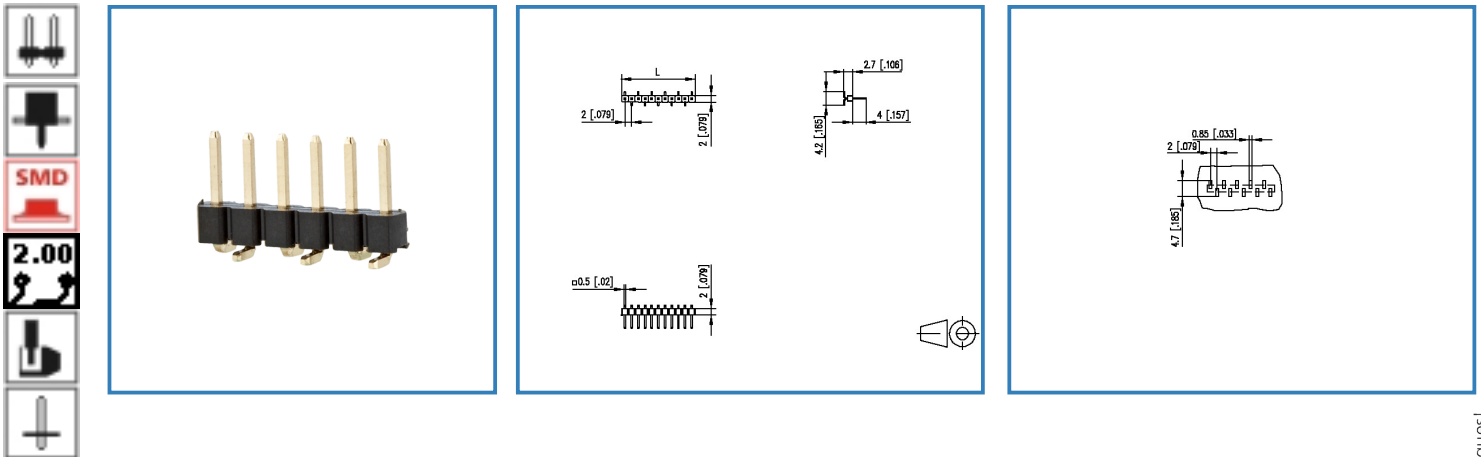


# Data Sheet

## PM20CxxVBNN

### Illustration



see enlarged drawing at the end of the document

### Product specification

- pin header, SMT solderable
- centerline 2.00 mm, direction of connection vertical 0°
- color black
- Tape & Reel packaging
- single row

© 2017 METZ CONNECT - Technische Änderungen vorbehalten! Subject to modifications! Sous réserve de modifications techniques!



# Data Sheet

## PM20CxxVBNN

### Technical Data

#### General Data

min. number of poles	2
max. number of poles	40

#### Approvals

Rated current	1 A
---------------	-----

#### Material

insulating material	PE-HT
Glow-Wire Flammability GWFI	-
Glow-Wire Flammability GWIT	-
contact pin material	CuZn
contact pin surface	Ni + Au Flash

#### Climatic properties

upper limit temperature	105 °C
lower limit temperature	-40 °C

#### General

solderability	Acc. to IPC/JEDEC J-STD-020D-MSL 1
Tolerance	ISO 2768 -mH

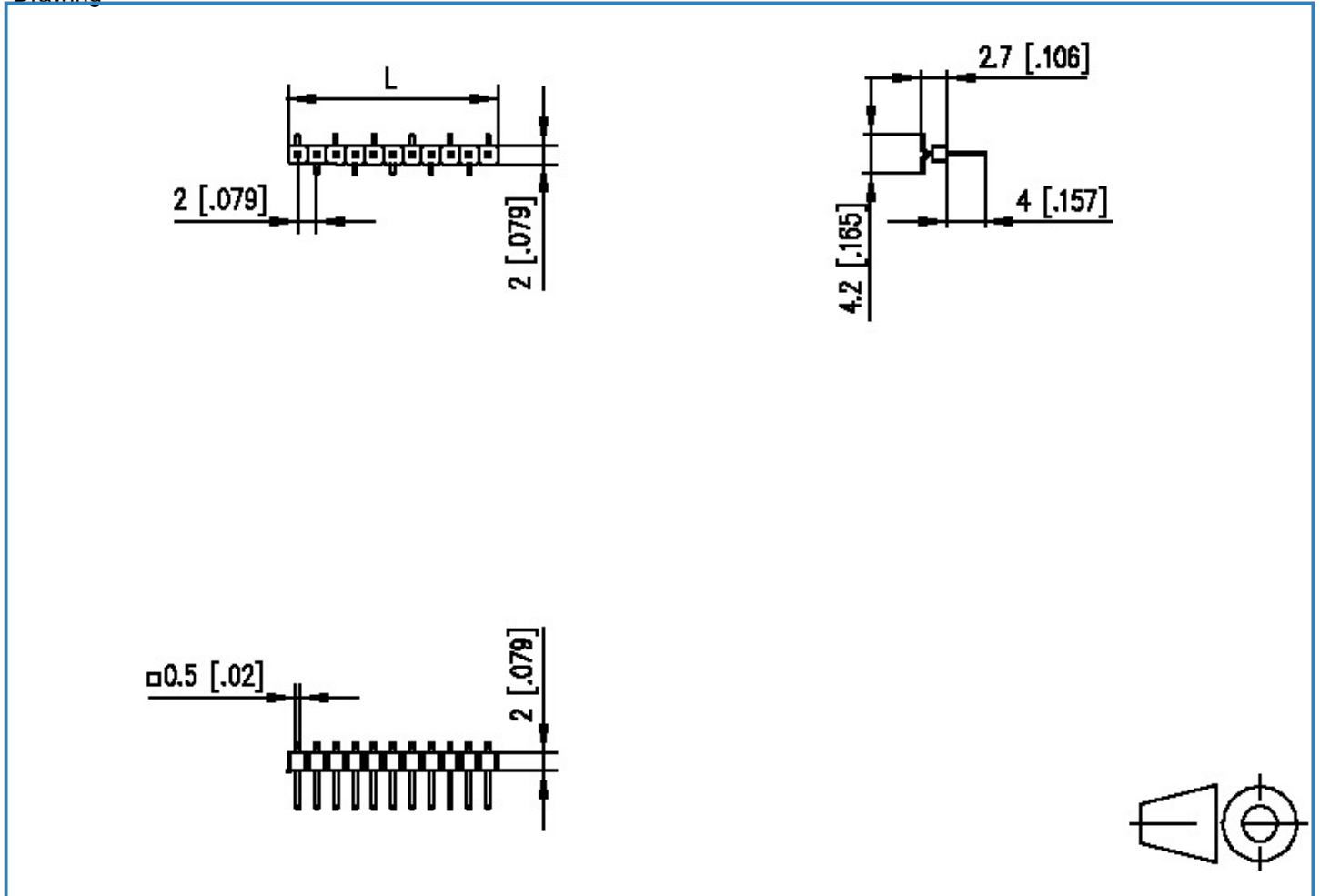


# Data Sheet

## PM20CxxVBNN

### Illustration

Drawing



$$L = (\text{pole size} - 1) \times \text{centerline} + 2.0 [0.079]$$



# Data Sheet

## PM20CxxVBNN

Page 4/4

P/N

PM20CxxVBNN

xx=number of poles

2017/05/05

### PCB Layout

