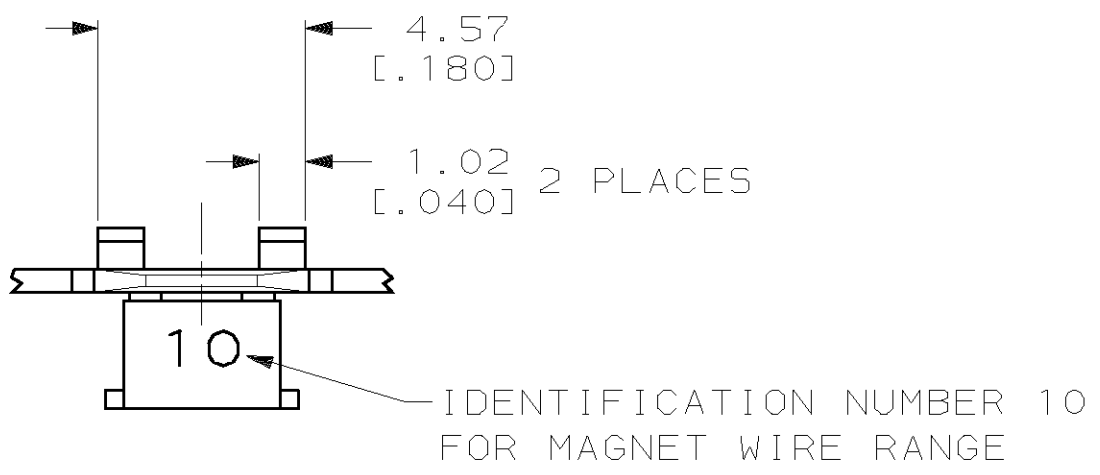
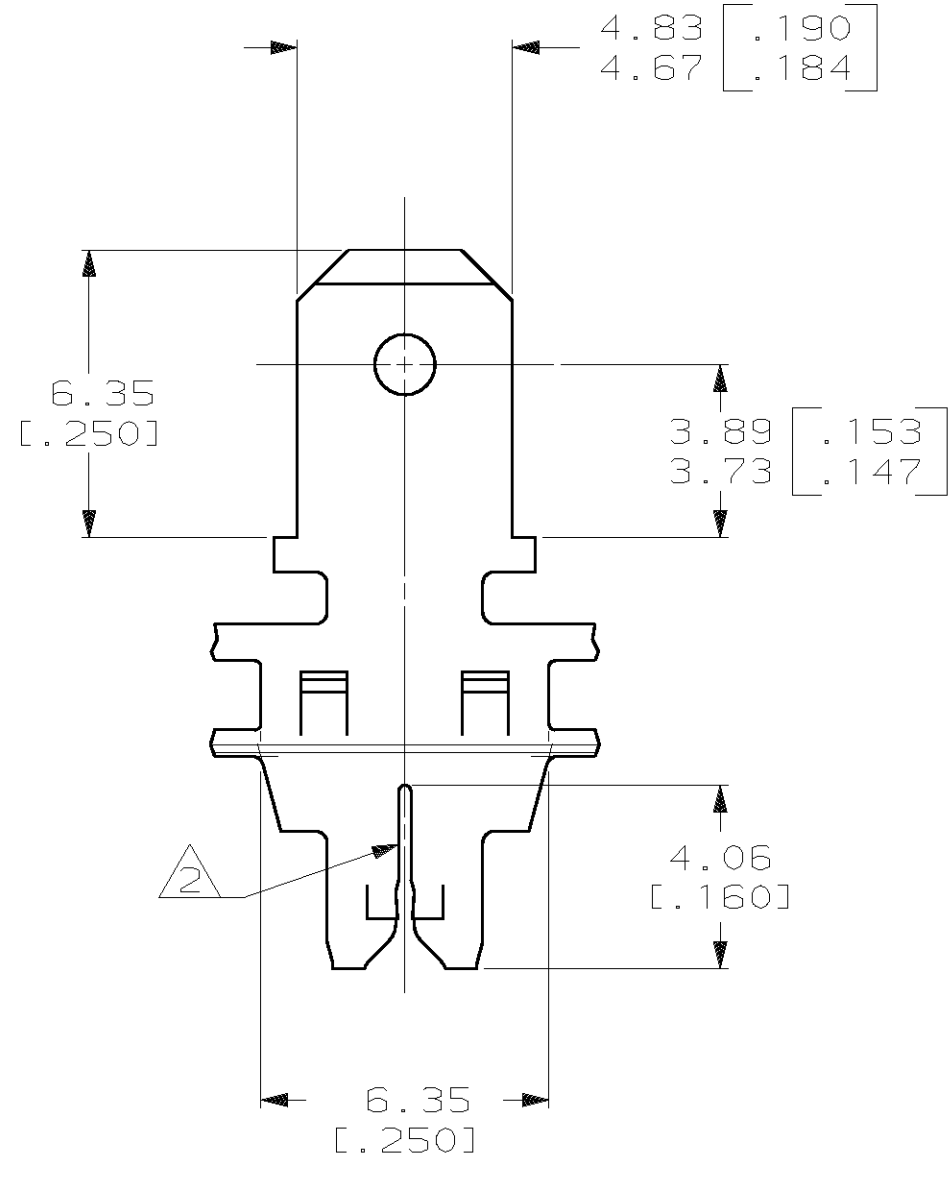
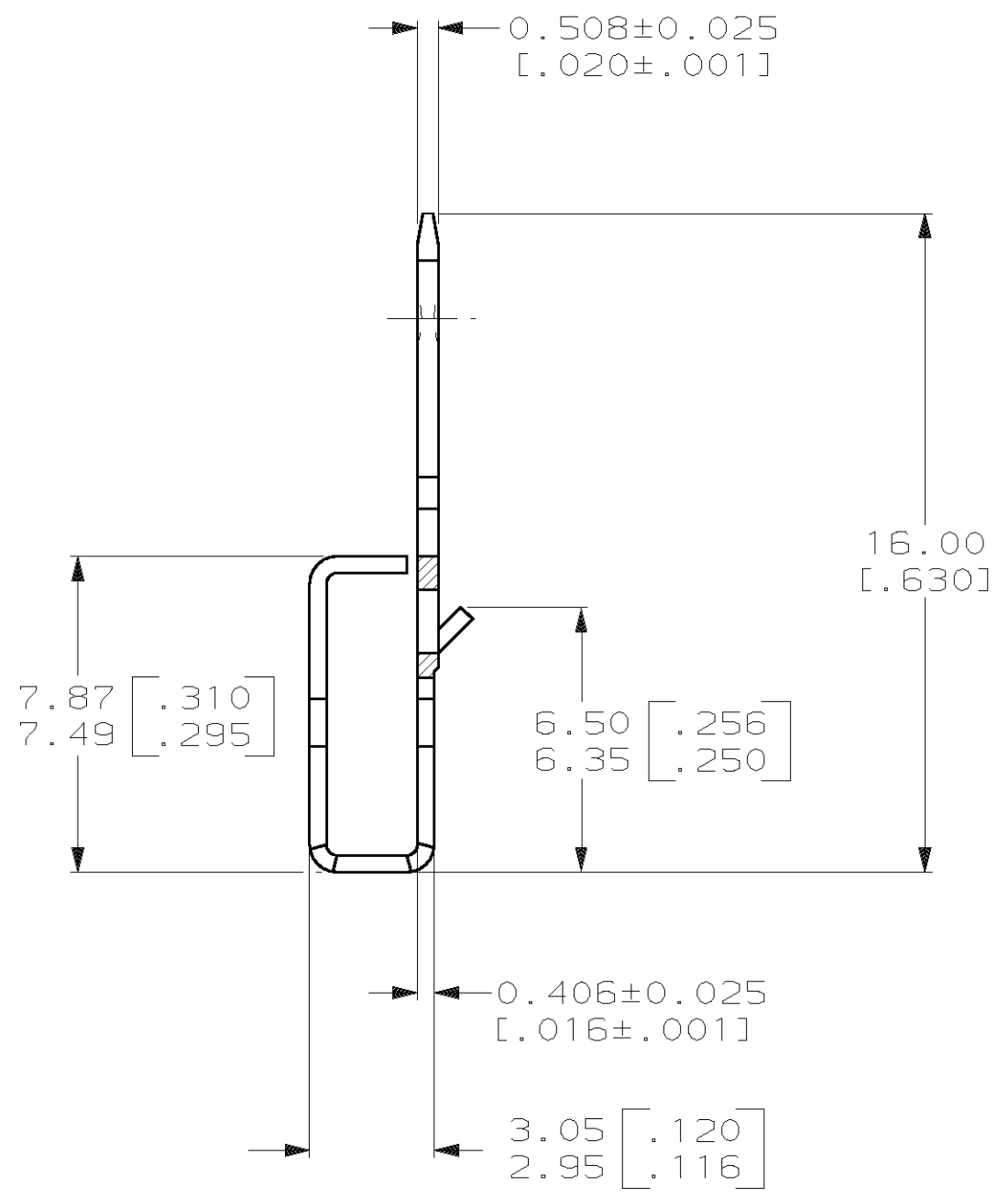
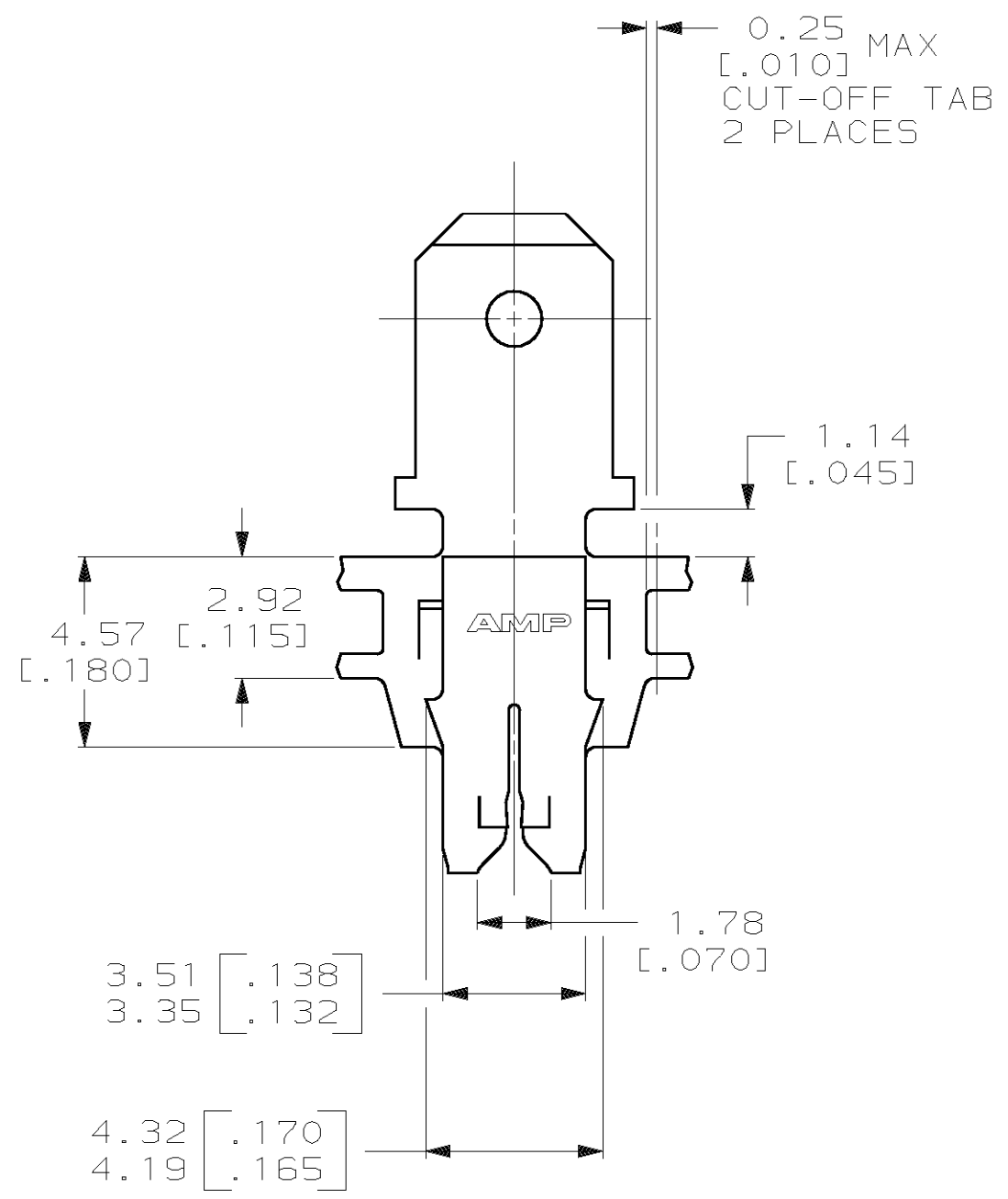


THIS DRAWING IS UNPUBLISHED. RELEASED FOR PUBLICATION ,19 .
 © COPYRIGHT 19 BY AMP INCORPORATED. ALL INTERNATIONAL RIGHTS RESERVED.

LOC		DIST		ZONE		LTR		REVISIONS		DATE	APPD
AF	50	P	F			J		REVISED PER OG3A-0088-00	18FEB00	MF/KR	



1 CONTINUOUS STRIP ON REELS WITH TERMINALS LOCATED ON 8.38±0.08 [.330±.003] CENTERS.
 2 SLOT TERMINATES A SINGLE OR DOUBLE MAGNET WIRE OF THE SAME SIZE AND TYPE; COPPER RANGE: 0.36-0.57 mm [#27-#23] AWG.



MATERIAL	PART NO
082 PRE-MILLED BRASS	63256-2
4M PRE-MILLED BRASS	63256-1

DO NOT SCALE PRINT. UNLESS SPECIFIED DIMENSIONS IN mm [INCHES] TOLERANCES ON : 2 PLC DEC ± 0.25 [.010] 3 PLC DEC ± - ANGLES ± -	DR 28/MAR/94 R.R. BUCHHEISTER JR. CHK 04/APR/94 MICHAEL S. FEHER APPD 04/APR/94 NELSON E. NEFF APPD 04/APR/94 TERRY L. SHUTTER	AMP AMP Incorporated Harrisburg, PA 17105-3608 NAME TAB, 4.75 [.187] FASTON™, MAG-MATE™	
MATERIAL SEE CHART	PRODUCT SPEC 108-2012	SIZE C	CAGE CODE 00779
FINISH 0.002032 [.000080] MIN TIN PLATE	APPLICATION SPEC 114-2094	DRAWING NO C=63256	
	WEIGHT -	SCALE 6:1	SHEET 1 OF 1

THIS DRAWING IS A CONTROLLED DOCUMENT FOR AMP INCORPORATED. IT IS SUBJECT TO CHANGE AND THE CONTROLLING ENGINEERING ORGANIZATION SHOULD BE CONTACTED FOR THE LATEST REVISION.