

**Technical specification:**

Rated voltage: 30 V  
IEC 61076-2-101

Current rating: 2 A at 40°C  
IEC 61076-2-101

Insulation resistance: >=100 MΩ  
IEC 60512

Pollution degree: 3/2  
IEC 60664-1

Degree of protection: IP 67, in mated condition  
IEC 60529

Temperature range: -30°C ... +130°C  
EN 60512-11-10  
-40°C  
EN 60512-11-4  
-40°C ... +130°C  
UL 2238  
-30°C ... +130°C

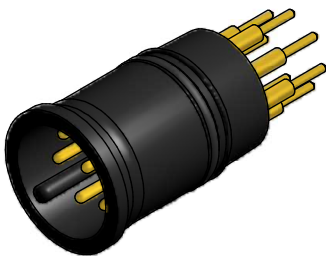
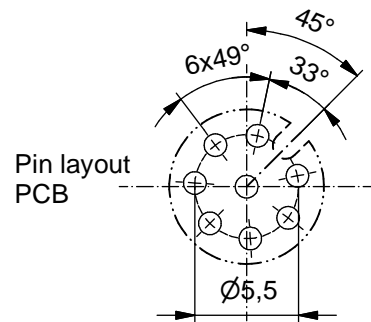
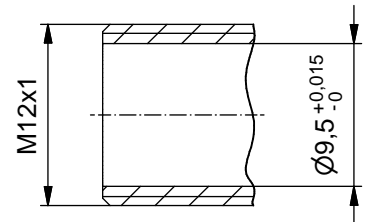
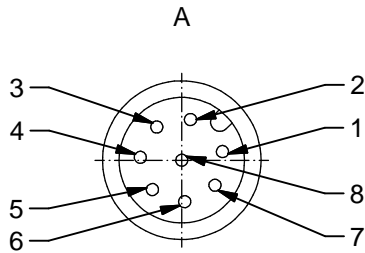
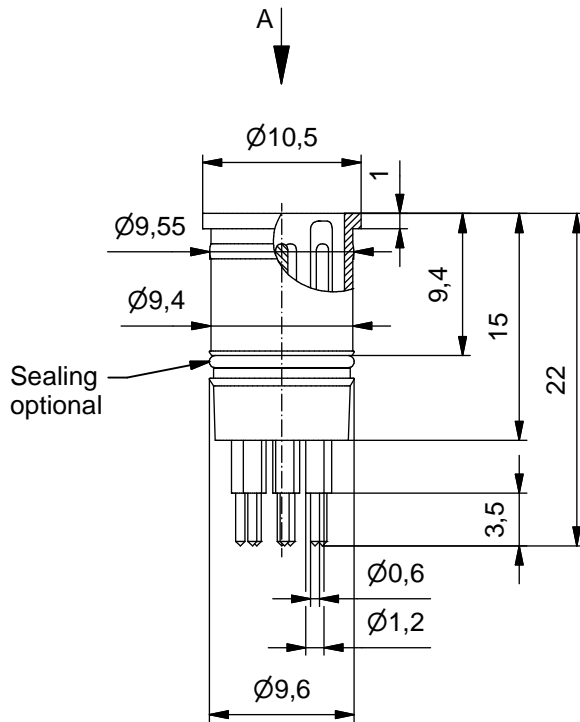
Mating cycles: >=100  
IEC 60512-9a

**Materials:**

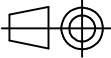

Contact: CuZn, Ni b / Au 0,2 gal.

Contact carrier: PA GF, UL 94 V-0 like RAL9005

Sealing: FPM



Part no:	Description:	Pos	Construction:
43-01635	SAL - 12 - ES8 - P	8	without sealing
43-01701	SAL - 12 - ESO8 - P	8	with sealing

DO NOT ALTER CAD DRAWING BY HAND Directive 2011/65/EU RoHS compliant	Index: d 11.06.15 fro Ä5678 UL adaptation	 dim. in mm		title: <b>Panel plug M12x1 with dip solder</b>	
		date	name		
		drawn	15.09.10	Franz	dwg no: <b>43K1A1175</b>
		appd.	15.09.10	Mankopf	
	general tolerance:	0 ± 0,50mm		part no:	
		0,0 ± 0,25mm			
		0,00 ± 0,10mm			
					
<small>THIS DRAWING MAY NOT BE COPIED OR REPRODUCED IN ANY WAY, AND MAY NOT BE PASSED ON TO A THIRD PARTY WITHOUT WRITTEN PERMISSION. OWNERSHIP AND COPYRIGHT OF CONEC GmbH</small>					