

6

5

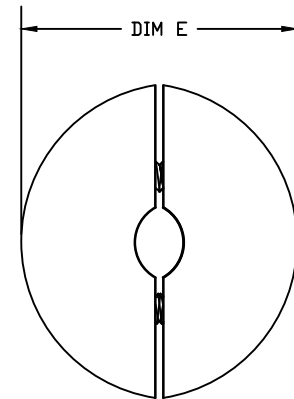
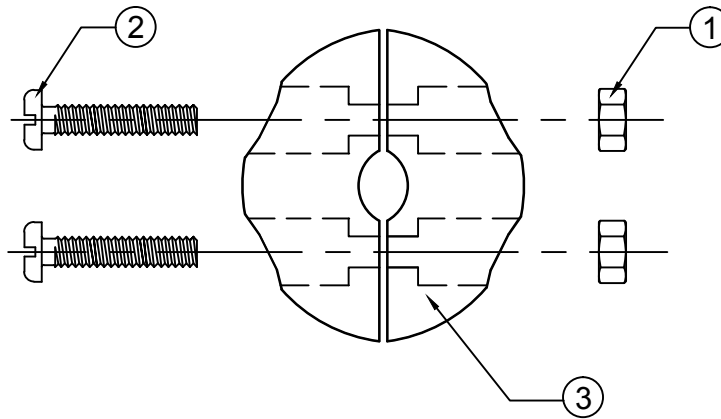
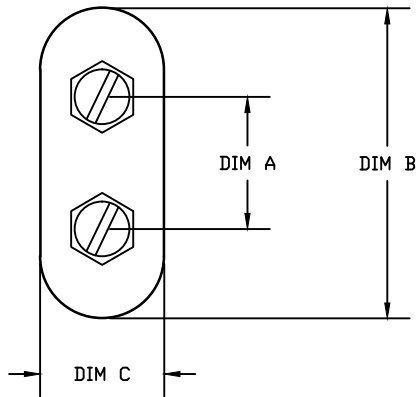
4

3

2

1

ENGINEERING #	MATERIAL #	CABLE DIA.	DIM A	DIM B	DIM C	DIM E
9521	1302264374	.430 - .750 (10.92 - 19.05)	1.078/1.046 (27.38/26.57)	2.516/2.484 (63.91/63.09)	1.000± .016 (25.4)	2.22 (56.4) MIN.
9522	1302264375	.750 - .875 (19.05 - 22.25)	1.450/1.422 (36.83/36.12)	3.015/2.984 (76.58/75.79)	1.000± .016 (25.4)	2.91 (73.9) MIN.



E

E

D

D

C

C

B

B

A

A

ITEM	QTY.	DESCRIPTION	MATERIAL	FINISH
1	2	HEX NUT	STEEL	CAD.PL.
2	2	PHILLIPS PAN HEAD SCREW	STEEL	CAD.PL.
3	2	HOSE STOP	RUBBER	BLACK

RELEASE DRAWING	6/12/09
EC NO: WNA2009-0828	DRWN: TWICKERS
	CHKD: HK
	APPR: DTITUS
	2009/10/15
	2009/10/15
REV	DESCRIPTION
A	

QUALITY SYMBOLS
$\nabla=0$
$\sphericalangle=0$

	GENERAL TOLERANCES (UNLESS SPECIFIED)	
	mm	INCH
4 PLACES	±----	±----
3 PLACES	±----	±.005
2 PLACES	±----	±.010
1 PLACE	±----	±.020
ANGULAR ± 5°		
DRAFT WHERE APPLICABLE MUST REMAIN WITHIN DIMENSIONS		

DIMENSION STYLE IN/(MM)	
DRAWN BY	DATE
TV	2009/06/12
CHECKED BY	DATE
HK	2009/06/12
APPROVED BY	DATE
DTITUS	2009/10/15
MATERIAL NO.	
SIZE	A

SCALE NTS	DESIGN UNITS INCH	THIRD ANGLE PROJECTION
TITLE		
HOSE STOP ASSEMBLY		

MOLEX INCORPORATED		
MATERIAL NO.	DOCUMENT NO.	SHEET NO.
	SD-130226-001	1 OF 1
THIS DRAWING CONTAINS INFORMATION THAT IS PROPRIETARY TO MOLEX INCORPORATED AND SHOULD NOT BE USED WITHOUT WRITTEN PERMISSION		

6

5

4

3

2

1